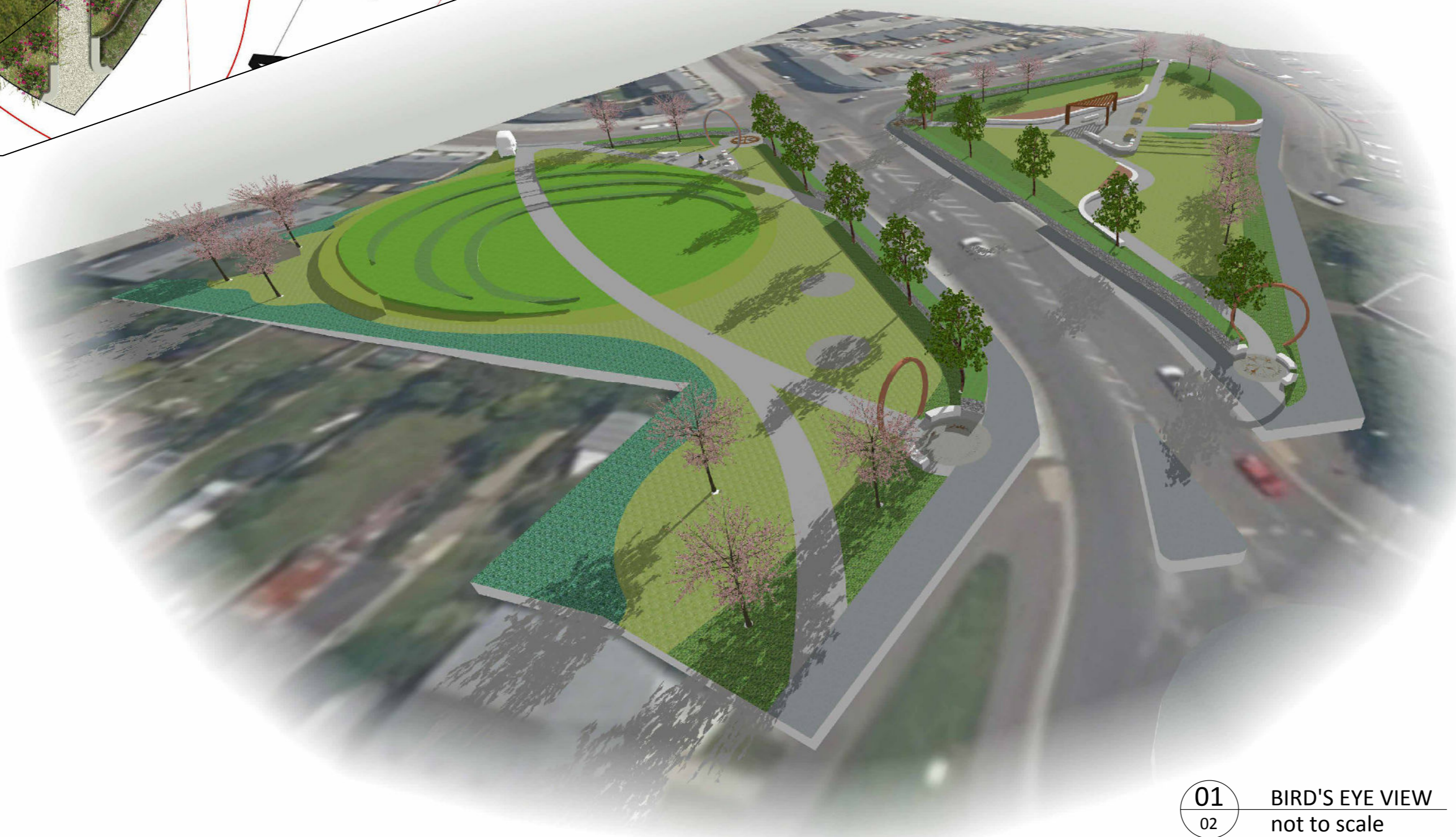
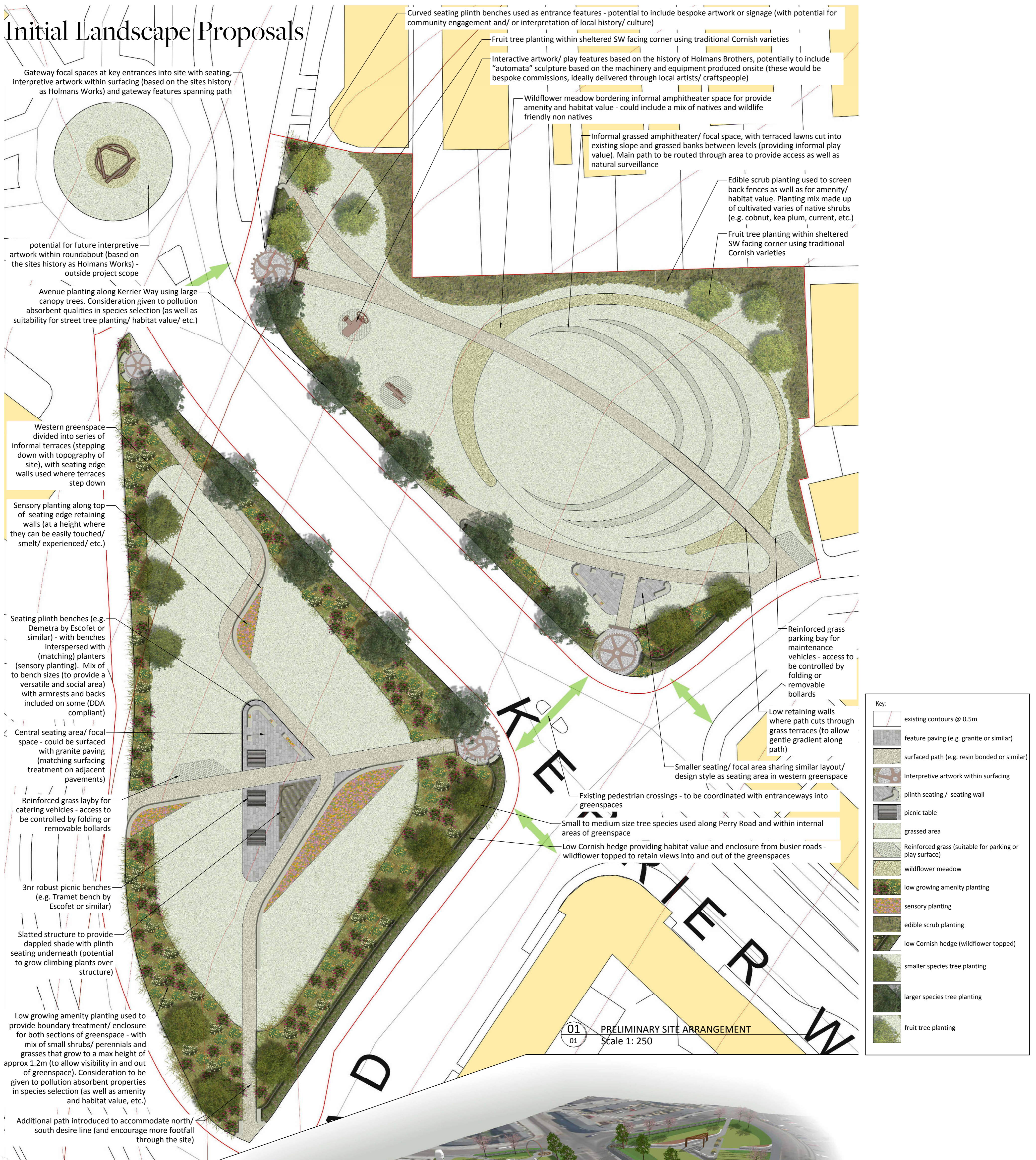


Initial Landscape Proposals



View of Western Greenspace



View along Kerrier Way



Kerrier Way - Planting

Avenue Street Tree Planting

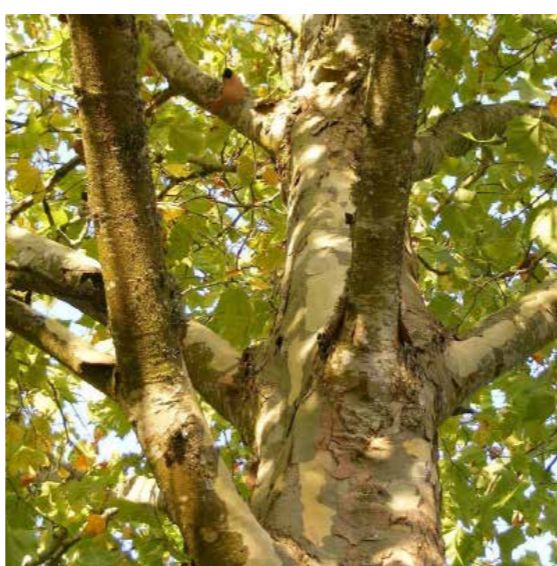


Along **Kerrier Way**, to the centre of the site, an avenue of **large street trees** will frame the park. Trees will be selected for their **pollution absorbent** qualities and will provide both **shade** in the summer and **colour** in the autumn.

Along **Perry Road**, **smaller trees** will be selected, but with the ability to also provide **shade** for pedestrians, plus year round interest.



Prunus avium 'Plena'
Double gean



Platanus x hispanica
London Plane Tree

Sensory Planting



Areas of **sensory planting** are proposed through the site, **along the pathways** in the western greenspace. Planting will be placed along the top of the retaining walls traversing the slope of the site and seating will be integrated into these to allow visitors to interact with the plants.

The planting mix would consist of **mostly perennials and grasses**, chosen for their sensory qualities, with some **small shrubs** for year round structure.

This style of planting has **strong sensory qualities** providing additional interest in terms of touch, smell and sound, as well as movement and seasonal change.



Lavandula angustifolia
English Lavender



Stipa tenuissima
Mexican feather grass



Stachys byzantina
Lamb's ears

Pollution Absorbing Planting and Cornish Hedgerows



To the **margins** of both sides of the site, **low level shrubs, perennials and grasses** will be chosen to enclose the spaces, provide **increased habitat** for wildlife and be **densely planted** to absorb pollution.

Consideration will be given to species selection for their **pollution absorbent** qualities, such as the hairy leaved *Cotoneaster franchetii*, ridge leaved *Viburnum tinus* and waxy leaved *Ilex aquifolium*, all of which have been proven to have the optimum qualities to **trap pollutants**, thus ensuring **cleaner air for visitors**.

Wildflower topped Cornish hedges are proposed to provide **enclosure** from the busier roads as well as habitat value. These would be low enough to retain views into and out of the greenspaces



Low turf topped Cornish hedge



Cotoneaster franchetii
Franchet's cotoneaster



Viburnum tinus
Laurustinus



Ilex aquifolium
Common holly

Orchard Planting and Edibles



Within the eastern greenspace, an area for **fruit tree** planting will be created. Species selection will focus on **traditional Cornish varieties**, such as 'Cornish Mother' apples and Kea plums.

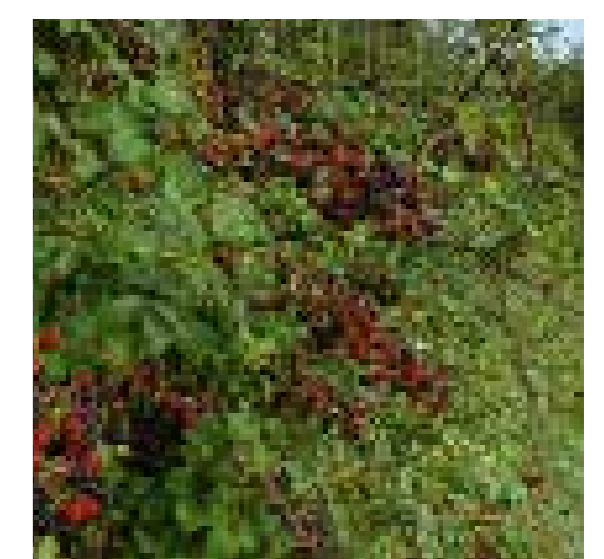
Wildflower meadow will sit adjacent to the orchard to provide food for **pollinators** and support to the orchard ecosystem and along the boundary, **edible hedging plants**, such as brambles and cob nuts will provide wildlife habitats and encourage visitors to value the food nature has to provide.



Malus domestica 'Cornish Mother'
Cornish Mother Apple



Prunus sylvestris 'Kea'
Kea Plum



Rubus fruticosus
Bramble

Kerrier Way - Features and Facilities

Landscape Furniture and Amenities



Curved concrete benches to form the entrance of the site



Integrated planters and benches



Benches integrated into the topography of the site



Sturdy picnic benches allow for social gathering

Central Social Areas



In the western greenspace, a dedicated **social area** will be created to provide a **focal point** to the space.



Surfaced in **granite** with a mixture of **benches** to provide comfort and **accessibility** for all, the space will also be partially covered by a **wooden slatted canopy** to provide dappled shade and the potential for climbing plants.

This space will be echoed in the eastern greenspace on a smaller scale.

Informal Amphitheater Space

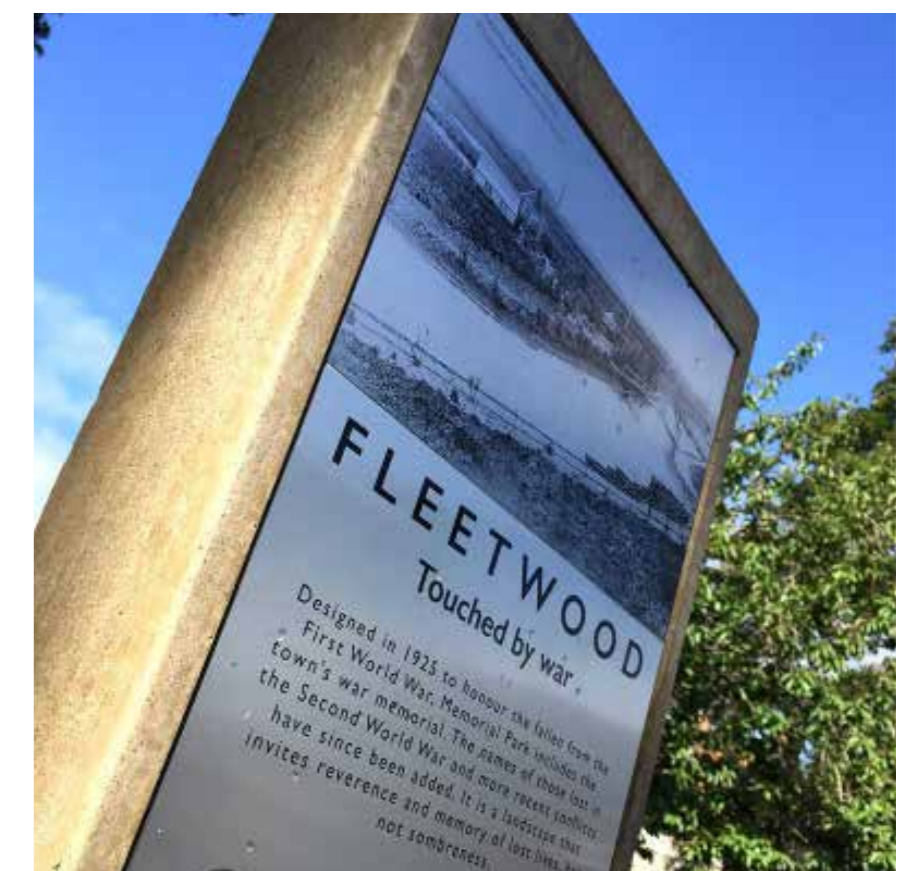
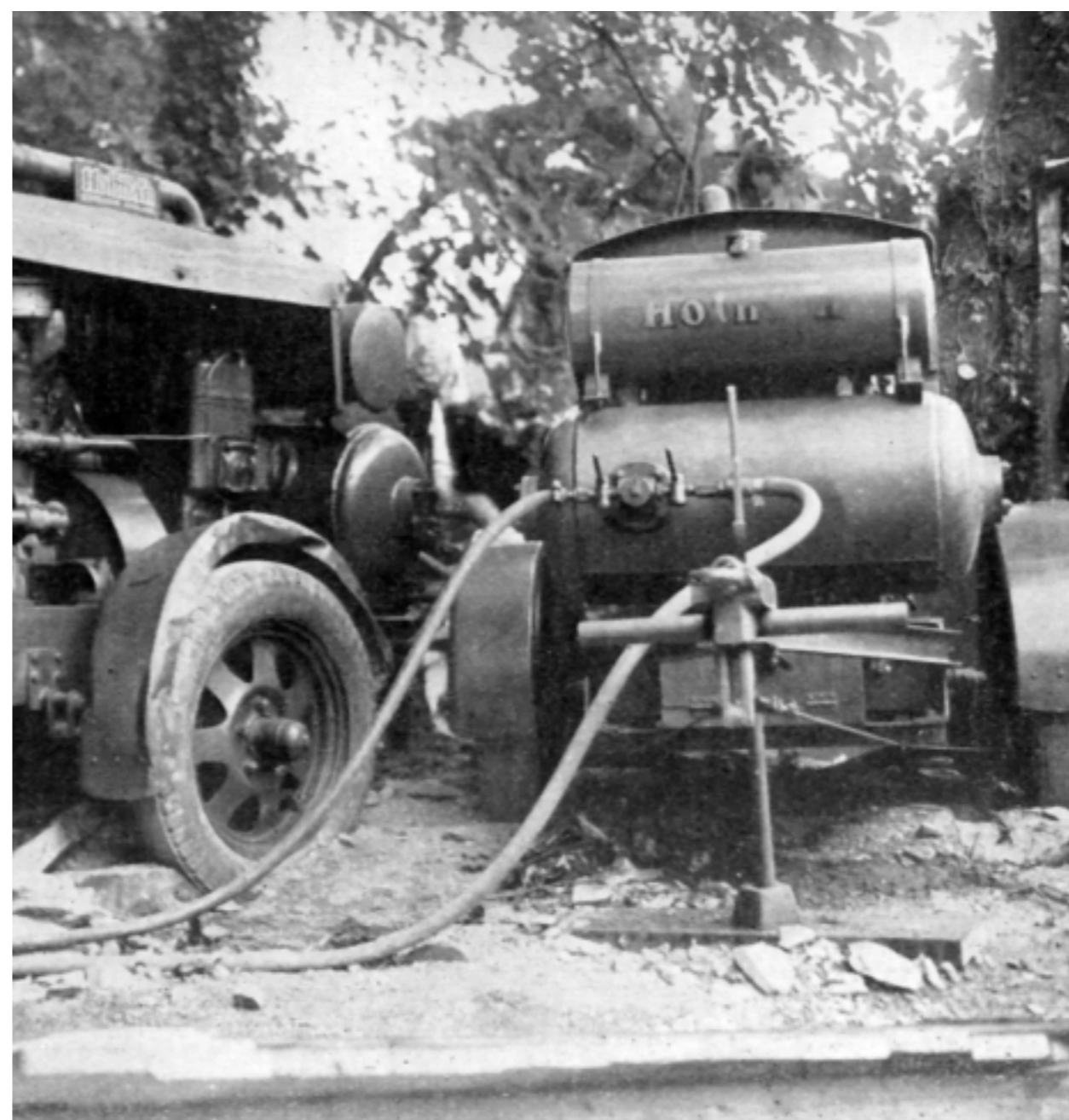
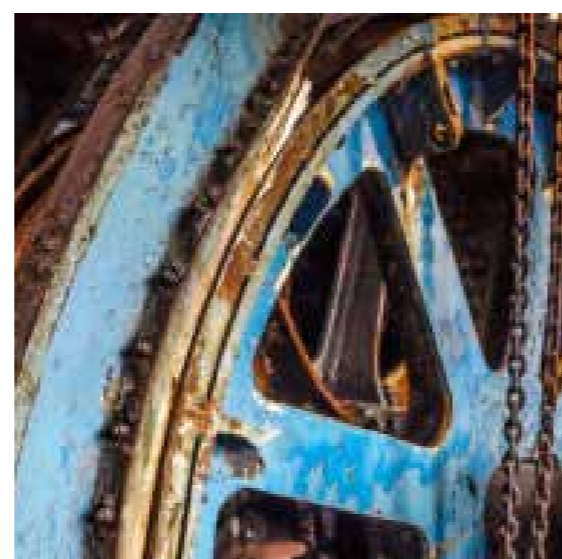


A low informal grassed **amphitheatre** will sit into the existing slope of the eastern greenspace with **terraced lawns** for recreation and socialising. The space will provide opportunity for gatherings, play or relaxation.

Kerrier Way - Artwork, Interpretation and Play

History of the Site and Interpretation

As the area is situated on the former **Holman factory site**, commemorating its industrial heritage is important. Through **signage and interpretation boards**, the strong links to the **mining history** of the town and the significant role played by Holmans in **developing machinery** for mining not just in Cornwall, but across the world, such as the Compressed Air Rock Drill, will be celebrated. There may be **opportunities for re-use of engineering artifacts** (produced at the Holmans Works) within the site features and artwork.



Interpretation boards will celebrate the history of the site

Artwork

Artworks commissioned for this site will have the potential to **engage visitors** and celebrate the heritage of the area through **mechanical and moving elements** and **industrial materials**, such as corten steel.



Engaging automata to reflect the **industrial heritage** could be commissioned from **local artists**



Artworks **embedded into pathways** or used to form **gateway features** at entrances to reflect the history of the area



Industrial inspired sculptures can be **focal points** and provide play interest



Movable **metal sculptures** which respond to the environment



Laser cut **corten steel** panels can be used as fencing or inset into concrete

Play

Although the site is not a dedicated play space, there is still the opportunity for **free play** and space to allow children to let of steam among the **grassy mounds** of the amphitheatre, among the **sensory planting** or testing their **balance** along the concrete benches. The **interpretive artwork features** would also be designed with play value in mind.

